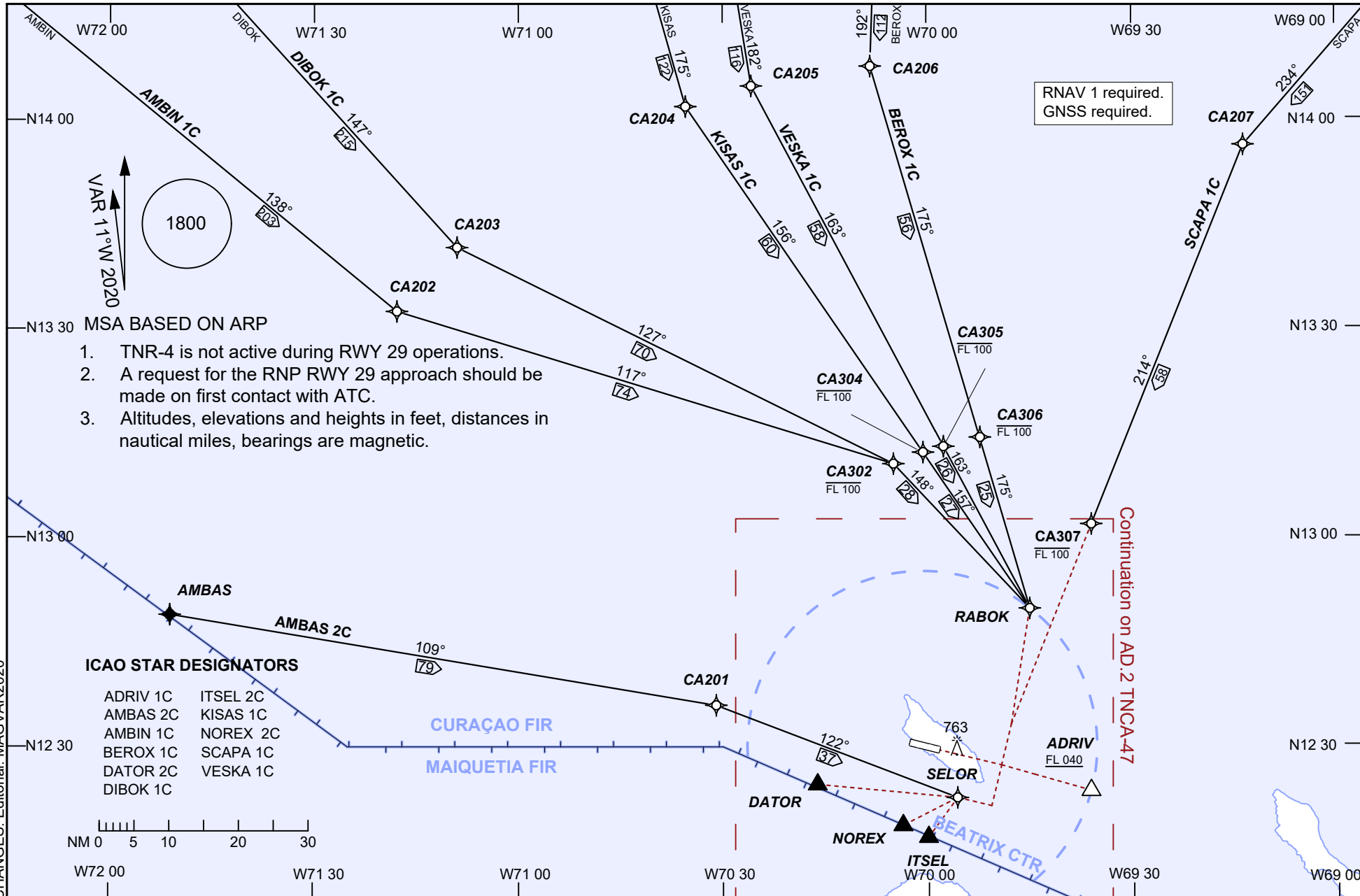


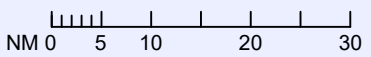
AIP DUTCH CARIBBEAN



- MSA BASED ON ARP
1. TNR-4 is not active during RWY 29 operations.
 2. A request for the RNP RWY 29 approach should be made on first contact with ATC.
 3. Altitudes, elevations and heights in feet, distances in nautical miles, bearings are magnetic.

ICAO STAR DESIGNATORS

- | | |
|----------|----------|
| ADRIV 1C | ITSEL 2C |
| AMBAS 2C | KISAS 1C |
| AMBIN 1C | NOREX 2C |
| BEROX 1C | SCAPA 1C |
| DATOR 2C | VESKA 1C |
| DIBOK 1C | |



RNAV 1 required.
GNSS required.

Continuation on AD 2 TNCA-47

STANDARD ARRIVAL CHART
INSTRUMENT (RNAV) OVERVIEW

AD ELEVATION: 62
TRANS LEVEL: FL 040
TRANS ALT: 2500 (2438)

BEATRIX:
TWR 118.0
APPRN 121.6
APP 120.9
ATIS 132.1

RWY 29
REINA BEATRIX INT'L
(TNCA), ARUBA

CHANGES: Editorial, MAG/VAR2020